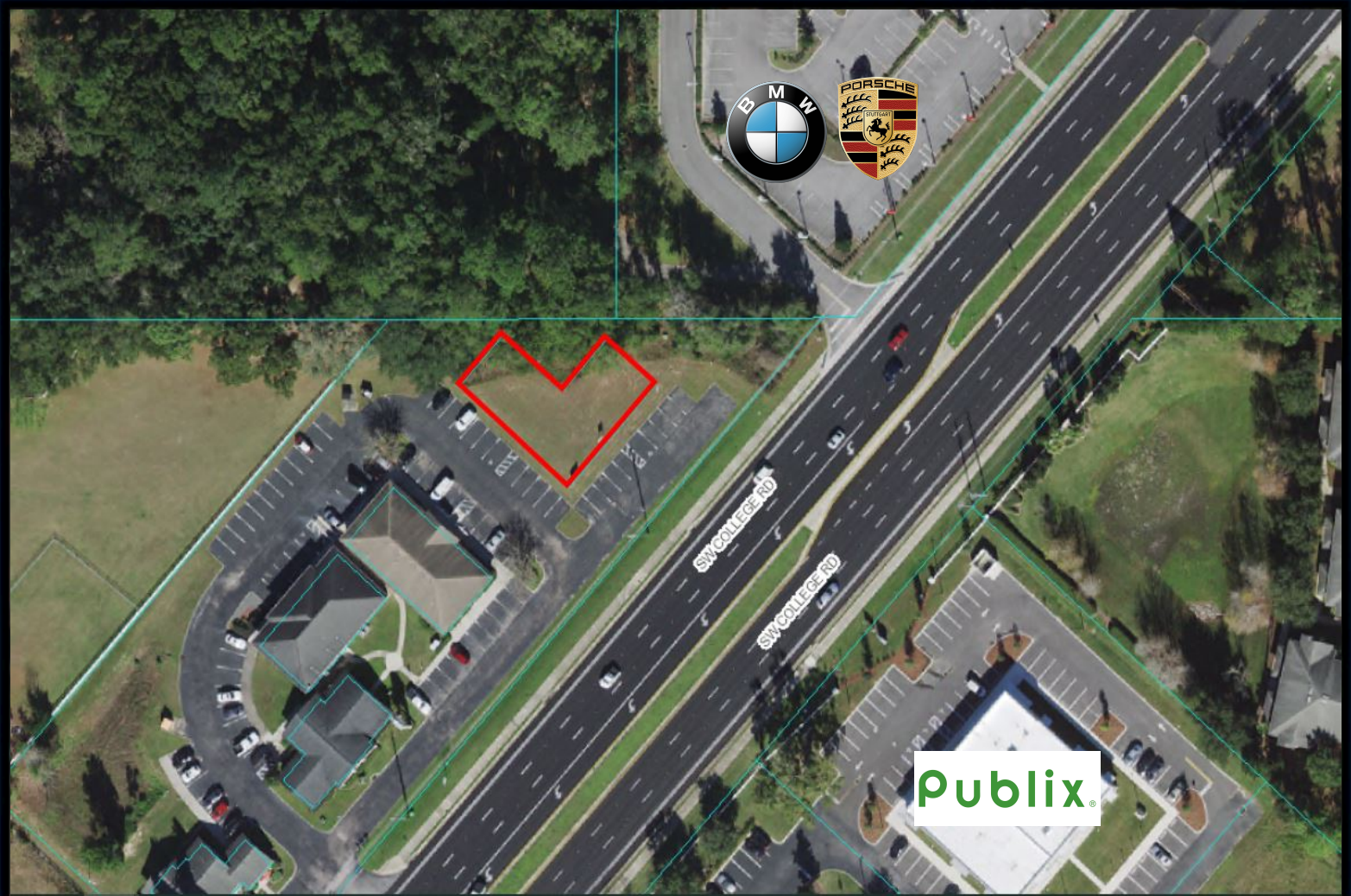


## **6,525 SF Building PAD**

**0 SW COLLEGE ROAD / SR 200 OCALA, FL 34474**



**\$398,000 PUD ZONING 0.15 ACRES**

- PUD Zoning
- 0.15 Acres
- 6,525 SF Building Pad
- Just North of Hwy 200
- High Traffic Site
- 83,665 Average Daily Traffic Count
- 1 Mile West of I-75
- Highway 200 6 Lane High Traffic Site
- Multi-Tenant Build Here
- Next to BMW and Porsche Dealership
- Across from Heathbrook and Publix (In place of High Traffic Site)
- 1/4 Mile West of West Marion Hospital ( In place of just North of Hwy 200)
- Ideal for Medical / Professional Office, Mortgage, Legal, Therapy

**Lori J Busch / Broker | 352-804-5544 | [Ljbusch@OcalaProperty.net](mailto:Ljbusch@OcalaProperty.net)  
[www.OcalaProperty.com](http://www.OcalaProperty.com)**