

5 - 7.66 ACRES COMMERCIAL LAND FOR SALE BETWEEN OCALA AND THE VILLAGES

13900 SE US Highway 441 Summerfield, FL

High Visibility Premium Location for Shopping Center
Commercial Development with 685 Front Feet US 441

Acreage Available:
7.66 Acres
Subject to Survey

Dimensions:
5.01 Acres
685 x 1031 x 175 x 660 x 400
2.65 Acres
660 x 175

High Growth Location:
1 mile South of Belleview
4 miles South of Ocala
2 miles North of The Villages
Across from Del Webb's
Spruce Creek Main Entrance
60 miles North of Orlando

Zoning and Land Use:
B4 Zoning
Commercial Land Use

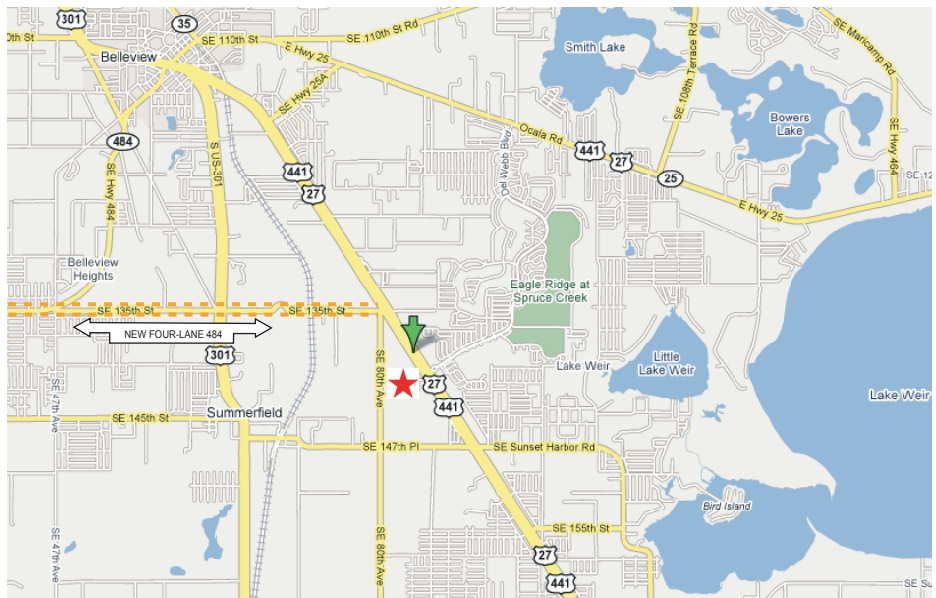
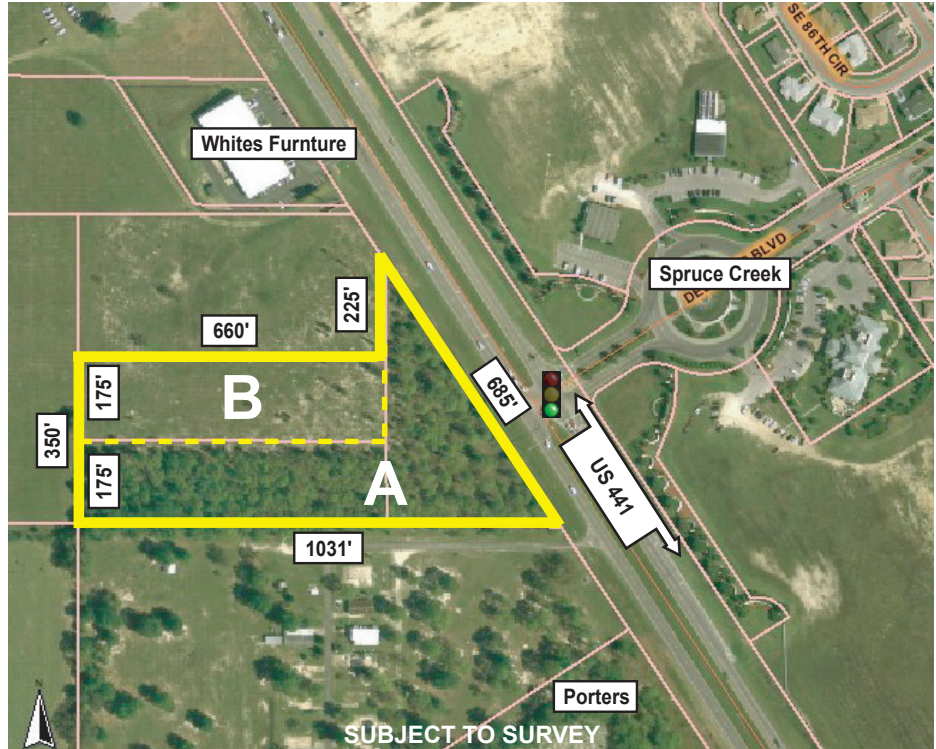
Infrastructure:
Marion County Water
Marion County Sewer

Demographics:
Traffic Count: 36,000
Population (5mi): 45,719
Avg Household Income: 52,574

Ideal for:
Commercial Development
Mixed Retail, Shopping Center
Office Complex, Banking, Insurance
Investment Firm, Medical, Hospital,
Hotel, Restaurants

Price:

A	5.01 Acres	\$1,900,000	8.706 psf
B	2.65 Acres	\$800,000	6.930 psf
A & B	7.66 Acres	\$2,700,000	8.090 psf



BUSCH REALTY & Development, LLC

Acquisition, Investment, Management, & Sales

BuschRealty.com - OcalaProperty.com

3300 SE 3rd Ave
Ocala, FL 34471

Phone: 352-690-1909
Fax: 352-690-1908