

# 12.41 Acres B4 Commercial Hwy 484 Ocala Marion County FL

Neighboring Wal-Mart, Bealls, and National Names  
1,000+ Feet Frontage on Hwy 484

**Property:**

12.41 Acres

**Front Feet:**

Hwy 484: 1,000+ ft

**Zoning:** B-4

**Land Use:** Commercial

**Location:**

State Road 200 and Hwy 484

**Population:**

3 mile 20,035  
5 mile 35,000

**Traffic Counts:**

SR 200 18,300  
Hwy 484 10,000

**Developments:**

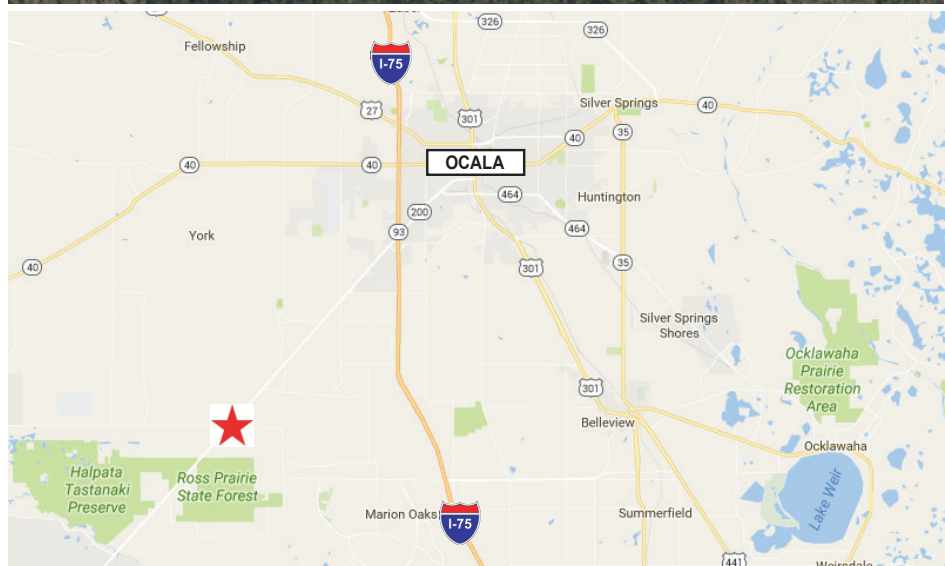
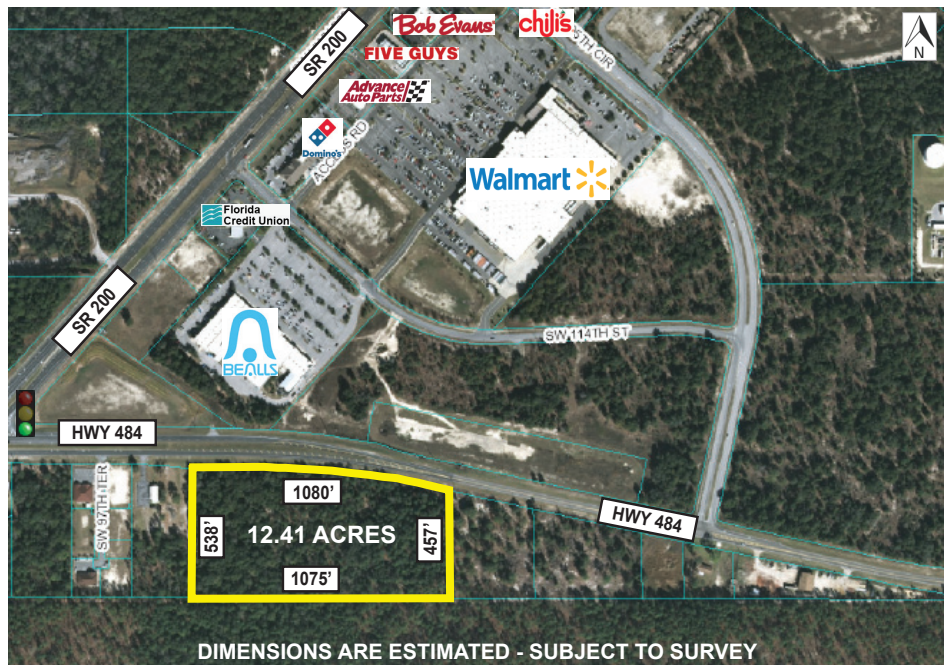
- Oak Run
- Marion Oaks
- Citrus Hills
- Pine Run
- Hidden Lake
- Stone Creek
- Bel Lago
- On Top of the World

**Price: \$875,000**

Per Acre \$ 70,508

Per SF \$ 1.619

**Your Location is Here!**



**Ideal For...**

- |                |                       |                          |
|----------------|-----------------------|--------------------------|
| Big Box Retail | Research & Laboratory | Drug Stores              |
| Grocery        | Office Headquarters   | College & Education      |
| Medical Center | Sports and Training   | Mixed Use & Multi-Family |



## BUSCH REALTY & Development, LLC

Acquisition, Investment, Management, & Sales

BuschRealty.com - OcalaProperty.com

Phone: 352-690-1909

Fax: 352-690-1908

3300 SE 3rd Ave  
Ocala, FL 34471-0429